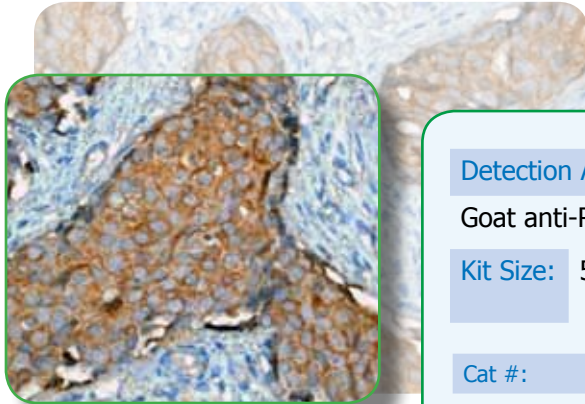
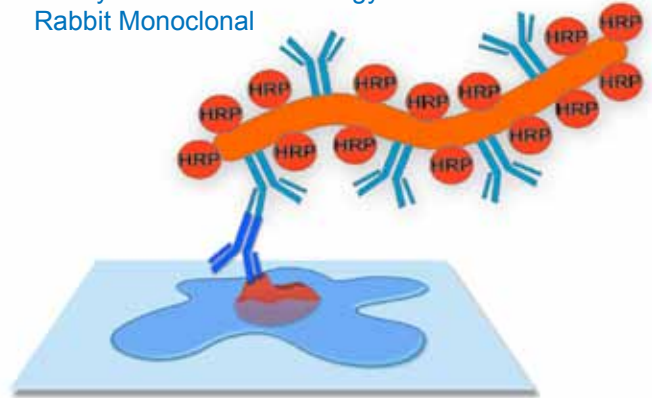


Ace™ IHC Detection Kits

Epitomics Ace IHC Detection Kit is a complete ready-to-use single color detection system, designed to be utilized with Epitomics primary Rabbit Monoclonal antibodies (RabMab®) for detection of specific target antigens in formalin fixed, paraffin-embedded tissue samples. When combined with an appropriate RabMab® the IHC Detection Kit combines the superior antigen recognition of rabbit monoclonal antibodies with novel polymer based enzyme labeled secondary antibody which provides a stronger and cleaner signal than comparable non-polymer based secondary antibodies.

A Polymer Based Technology with Rabbit Monoclonal



HSP73 staining on human breast carcinoma using Ace IHC detection kit

Detection Antibody Type: Goat anti-Rabbit IgG Polymer
Specificity: Rabbit IgG

Kit Size: 50 Slides

Cat #: 4002-1
2° Ab Type: HRP-Polymer
Chromagen: DAB

Kit Contents:

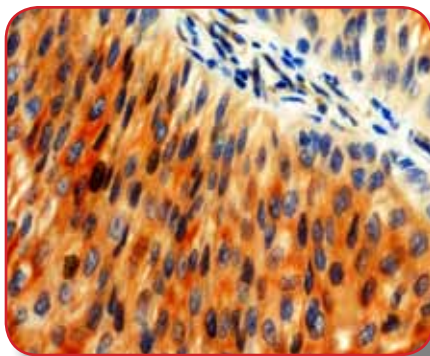
1. Antigen Retrieval solution (1X)
2. Peroxidase Block solution
3. Blocking solution
4. Primary antibody diluent
5. Negative control rabbit IgG (1X)
6. Secondary anti-Rabbit (HRP)
7. *DAB or Fast Red tablets

*Depending on the kit

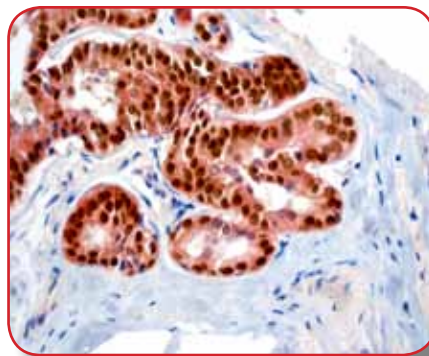
Tandem IHC™ Staining and Detection Kits

Tandem IHC Detection is a complete dual staining system. With this easy-to-use kit, pair any suitable RabMab with a Mouse MAb for a high quality double staining on various tissues.

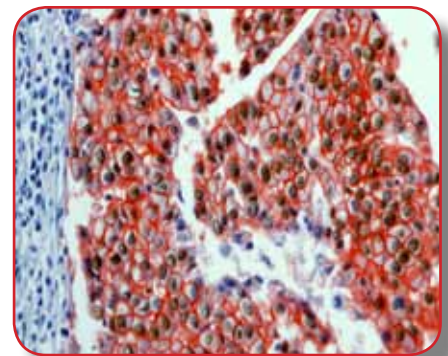
Kit	Cat #	Detection Antibodies	Kit Size
Detection Kit I	4000-1	Anti-Rabbit-HRP + Anti-Mouse-AP	50 Slides



Cytokeratin 8 + Ki-67

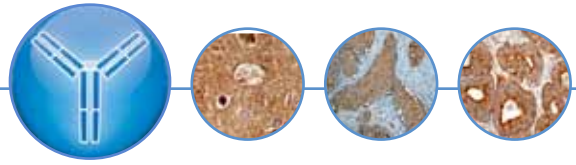


Her2 + ER Alpha



p53 + Her2

For more info - visit IHC Portal on-line @ www.epitomics.com



Secondary Antibodies

Goat Anti-Rabbit IgG Polymer

Size: 10ml

Description: Goat Anti-Rabbit polymerized HRP or AP labeled secondary antibody for detection of Epitomics primary Rabbit Monoclonal (RabMAbs™) in Immunohistochemistry. This polymer based secondary antibody is optimized to provide a strong, clean signal in a 2 step IHC detection method.

Cat#: **Antibody Type:** **Applications:** **Specificity:** **Label:**

3051-1 Polymer Conjugate IHC Rabbit IgG HRP

Rabbit Monoclonal Isotype Control

Rabbit IgG Isotype Control

Cat# ISO-XXXX*

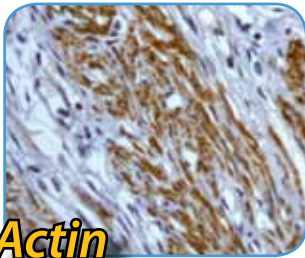
Size: 100ul

Description: Isotype control concentration matched to Primary Rabbit MAb for use in Flow cytometry and IHC. Each IgG control is provided at the same concentration as the primary antibody and in the same 100ul aliquot. Simply use the isotype control at the same dilution as the primary antibody.

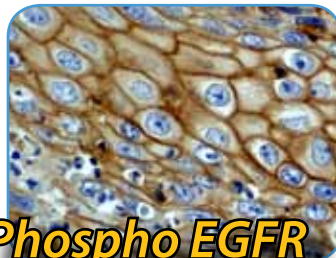
Antibody Type: Rabbit Monoclonal IgG

Applications: FC, IHC

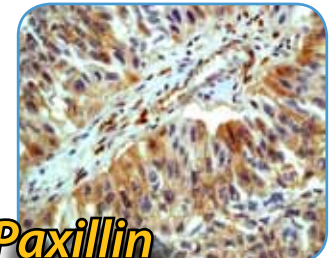
*XXXX - for ordering substitute first four digits of the primary antibody's catalog #.



Actin



Phospho EGFR



Paxillin

Complete datasheets and images for every antibody are available on-line @ www.epitomics.com